



## How to Contact Us

The DwarnaBio offices, clinic and biobank are located at the Biomedical Sciences Building within the University of Malta Msida Campus.

For any information, queries, or to cancel/change your visit appointment, please contact us via the following media.

				
Dwarna Offices	331	/	+356 2340 3299	contact@dwarna.mt
DwarnaBio Clinic	332	/	+356 2340 6259	/
Office	331	Dr. Lidia Ryabova	+356 2340 3272	lidia.ryabova@um.edu.mt
Office	321	Eric Santucci	+356 2340 3218	eric.santucci@um.edu.mt
Office	405	Jasmine Spiteri	+356 2340 3866	jasmine.spiteri@um.edu.mt

## Getting to the University

### Private car or taxi

The Msida campus can be accessed by car through the ring road (refer to **Figure 1**). There are 3 entrances to enter the ring road, namely the:

- Main entrance located opposite to the Mater Dei Day Care Unit.
- Old main entrance located at Mons. Carmelo Zammit Street, which is close to the Msida Skate Park.
- Sports area entrance located at Edgar Bernard Street, by the University track and national pool.

Upon reaching the IT Services Building, take the first right to reach Car Park 3. Available parking spaces can be used while attending the visit.

### Public Transportation

There are several bus stops close to the main entrance named *University 1-4* and close to the old main entrance at the Msida Skate Park named *Qroqq 2-3* (refer to **Figure 1**).

The bus routes stopping here are:

24, 25, 31, 32, 35, 106, 117, 120, 121, 122, 135, 181, 182, 204, 206, 209, 210, 213, 218, 226, 233, 238, 250, 260, 280, 300, TD13, X1, X1A, and X2.

Further information about these routes and schedules can be found using the link <https://www.publictransport.com.mt/en/routes-timetables/958>.

## Where to Find Us

The **Biomedical Sciences Building** is located on the diametrically opposite side of campus from the Main Entrance, off the ring road running above the Sports Complex, and close to IT Services and the Faculty of ICT. It is accessed via the **main door** by the reception and another **side door** on the right closer to the Department of Pharmacy (refer to **Figure 2**). When using the main door, the corridor on the right will lead to the elevator, whereas the side door is directly to the left of the elevator. Exiting

the elevator on the third floor and going to the corridor on the left will lead to the clinic and our offices.










**Figure 1** Map showing the routes to reach the Biomedical Sciences Building.

The 3 **purple lines** refer to the path to follow on foot through the campus from each entrance.  
 The 3 **yellow lines** refer to the route to follow by car from the different entrances.  
 The 4 bus stops **circled in red** are named University 1 to 4.  
 The bus stop **circled in black** is named Qroqq 3.

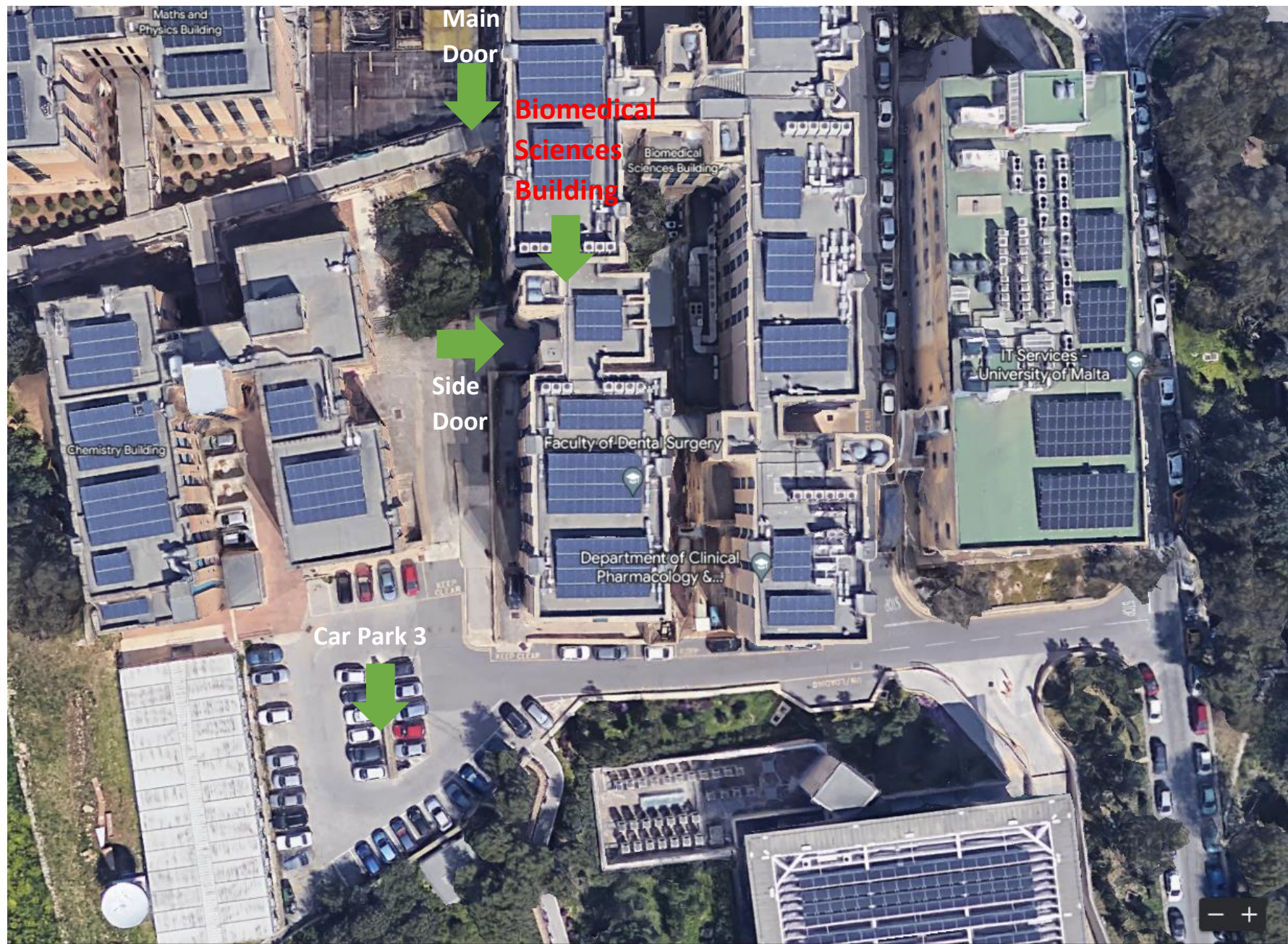
## Main Landmarks

- 1 Car Park 3
- 2 University Main Entrance
- 3 Old Main Entrance
- 4 Sports Area Entrance
- 5 IT Services Building
- 6 Side Door
- 7 Main Door

## Routes through Campus

-  Route from Main Entrance on Foot
-  Route from Old Main Entrance on Foot
-  Route from Sports Area Entrance on Foot
-  Route from Old Main Entrance by Car
-  Route from Main Entrance by Car
-  Route from Main Entrance by Car
-  Route from Sports Area Entrance by Car





**Figure 2** Detailed view of Biomedical Sciences Building, showing the location of the doors allowing access to the building.